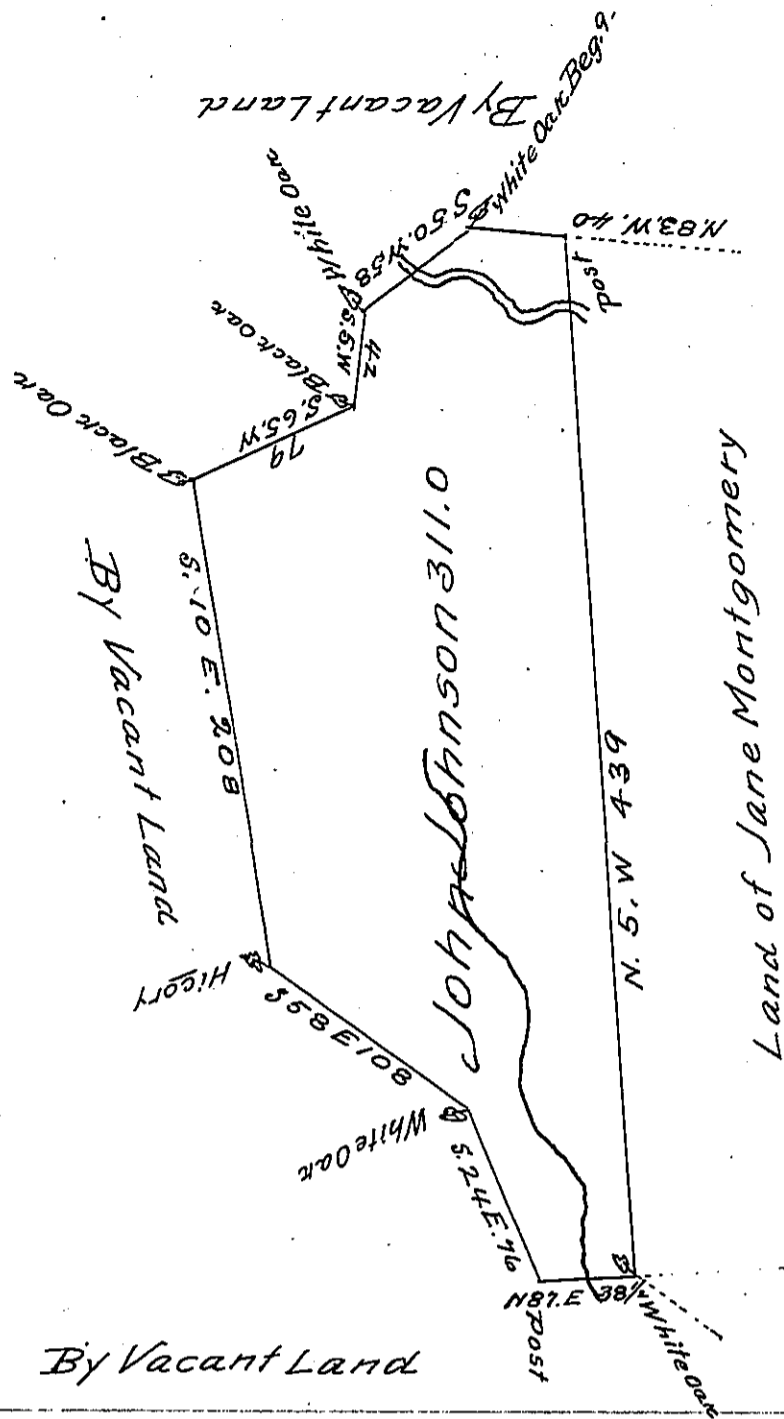


FORM No. 1.



The Draught of a Tract of Land Called _____ situate in the head of Buffalo Valley in the County of Cumberland containing Three hundred eleven acres with the usual allowance of six acres p Cent for roads.

Survey'd the 27th day of Novem^r Anno Dom 1769. in pursuance of an Order of survey to John Johnson bearing date at Philad^a the 3^d day of April Anno Dom. 1769 and numbered 333

W^m Maclay D.S.

To John Lukens Esq S.G.
of Pennsylvania

IN TESTIMONY that the above is a copy of the original remaining on file in the Department of Internal Affairs of Pennsylvania, made conformably to an Act of Assembly approved the 16th day of February, 1833, I have hereunto set my Hand and caused the Seal of said Department to be affixed at Harrisburg, this nineteenth day of February 1906

Laurel A. Brown
Secretary of Internal Affairs.